

**COGNISHIFT INSIDER, ISSUE 1,VOL-1 , ISSUE 01/25 APRIL**

## Serenity on Canvas: Shanthi Prabhakaran's Window into Nature

*By Dr. Prashant Madanmohan*  
*Editor-in-Chief, Cognishift Insider*

---

**“There is a certain quietude that only art can hold — a silence that sings, a stillness that breathes. In Shanthi Prabhakaran’s landscape paintings, that silence blossoms into beauty.”**

Held at the prestigious **Lalit Kala Akademi, Chennai**, the solo exhibition by artist **Mrs. Shanthi Prabhakaran** opened its doors on **25th March 2025**, inviting visitors into a world painted not just with color, but with feeling. Thirty evocative works on display — scenes born out of her travels, emotions, and memories — transformed the gallery into a sanctuary of light and landscape.

### A Window into the Wild

Every canvas in this exhibition seemed to offer a window to another world. Sceneries captured with such precision and softness — from mountains that shifted shape depending on the viewer’s angle to woods painted with split sunlight dancing across foliage — made one feel like they were stepping into the painting rather than observing it.

A particularly **striking work** depicted a **pink flowering tree** in full bloom. The painting seemed almost **three-dimensional**, its blossoms lifting from the canvas in hues so vivid they transcended realism. It wasn’t just technique — it was magic. **Depth, detail**, and a keen sense of **composition** define Mrs. Shanthi’s acrylic works, creating the illusion of motion within stillness.

### The Journey Behind the Brush

Speaking to visitors with grace and warmth, Shanthi Prabhakaran shared her passion for painting — a devotion spanning **over thirty years**. Her works are deeply personal, often inspired by the natural beauty she encounters during her visits to her children living abroad. The exhibition, in many ways, is a **journey of a mother, an artist, and a traveller** — each canvas a visual postcard of love and wonder.

Using **acrylic on canvas**, she captures fleeting moments — the light just before dusk, the gentleness of mist on a hill, the stillness of a lake — and immortalizes them with quiet reverence. Her **color palette is both grounded and generous**, speaking of earth, sky, and heart.

---

## A Tribute to Nature and Spirit

The theme of the exhibition, *"Let's paint a greener tomorrow on nature's canvas,"* is not just a poetic caption — it's a heartfelt plea. Through her art, Mrs. Shanthi reminds us of the fragile beauty of the world we inhabit, and the necessity of preserving its serenity.

One of the visitors, **Mari Poghosyan**, an Armenian impressionist, was deeply touched by the exhibition. "There is a soul in her landscapes," she remarked, "a voice in the silence. These are not just paintings; they are meditations."

---

## Inauguration and Accolades

The exhibition was inaugurated in the esteemed presence of **Thiru R. Nataraj, IPS (Retd.)**, Former MLA of Mylapore, whose words of encouragement uplifted both the artist and the gathering of art lovers, well-wishers, and fellow creators.

The show runs from **26th to 31st March 2025**, from **11 AM to 7 PM**, at **Lalit Kala Akademi's First Floor Gallery**, Greams Road, Chennai.

---

## Final Reflections

In a world saturated with distraction, **Shanthi Prabhakaran's art slows time**. It invites you to pause, to breathe, and to truly see. Whether it is a distant forest trail or a flowering tree on an unknown street, her work gently asks: *Can you still find beauty in silence?*

If your heart answers yes, this exhibition is where you need to be.

---

 Visit the show and rediscover the landscapes that live within you.

*Cognishift Insider proudly celebrates women artists whose brushstrokes become bridges between soul*

and soil.

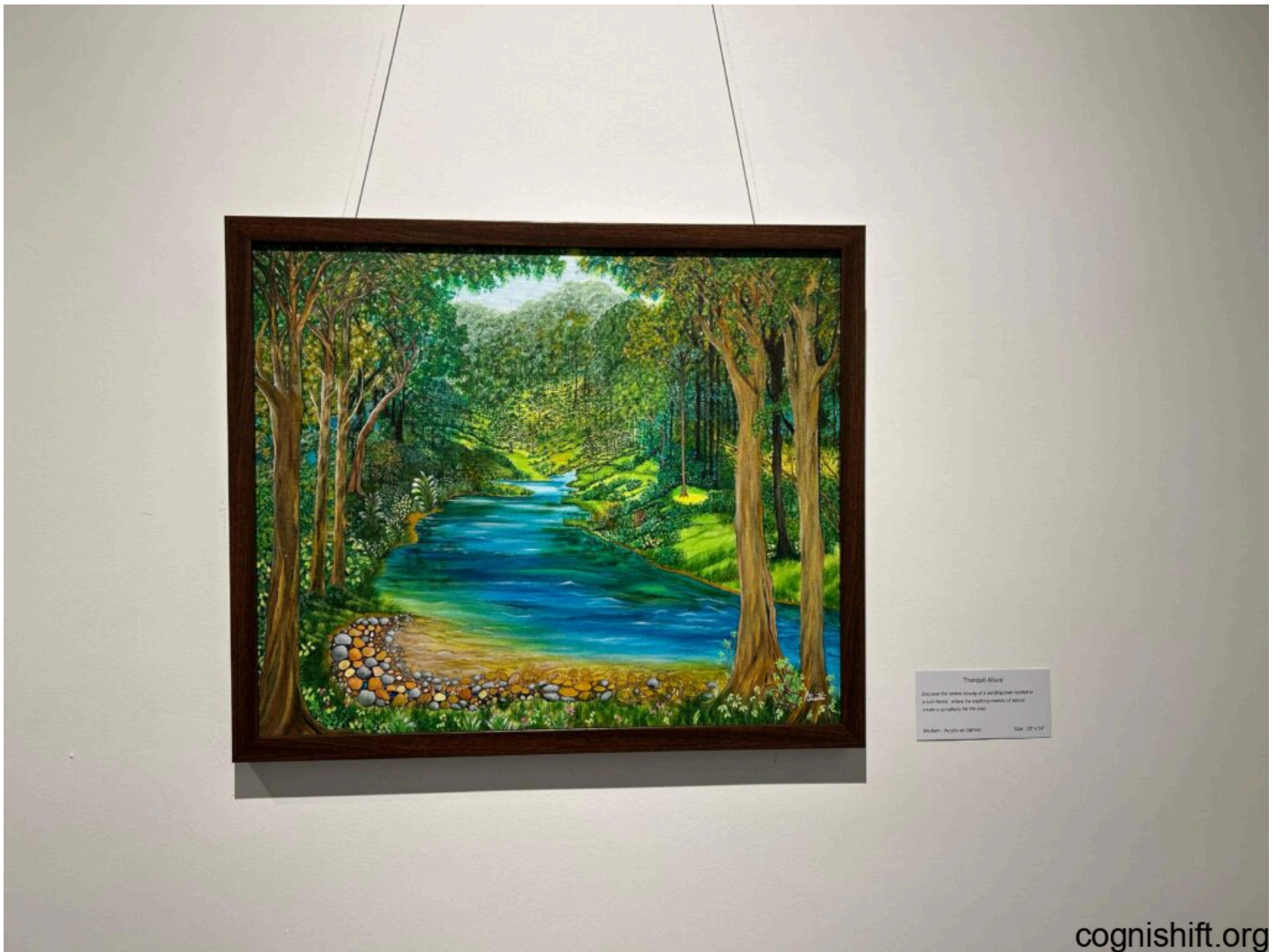
 Published in the May-June 2025 issue of Cognishift Insider  
 All rights reserved with Cognishift.org



cognishift.org







Tranquil Allure

Discover the serene beauty of a winding river nestled in a lush forest, where the gentle hum of nature creates a symphony for the soul.

Medium: Acrylic on Canvas | Size: 12" x 16"







Whimsical Woodland  
The landscape under the night moon  
Medium - Acrylic on Canvas Size - 30" x 24"

cognishift.org